

## WICKMAN **ACW Series**

## Electrics & Control Panel

- Siemens SIMODRIVE 611A motor drives providing variable speeds & feeds.
- Siemens SIMATIC S7 PLC
- Siemens components are used throughout the panel.
- Fully programmable 24-channel cam positioning unit - integrated to the Operators control panel.
- Fully programmable spindle speed and cycle times

**No more gear changes!**



## SPINDLE SPEED and FEED MOTORS SPECIFICATIONS

- Siemens, 3-phase, asynchronous, variable-frequency spindle motor.
- Siemens, 3-phase, brushless, variable-frequency feed motor.
- Siemens SIMODRIVE drives control both motors providing high torque at low speed. They also assure optimum dynamic performance and ultimate reliability.



## Centralized lubrication system

The centralized lubrication system assures long machine life, it reduces maintenance times & costs as well as reducing lubricating oil loss.

## Removable Swarf Conveyor

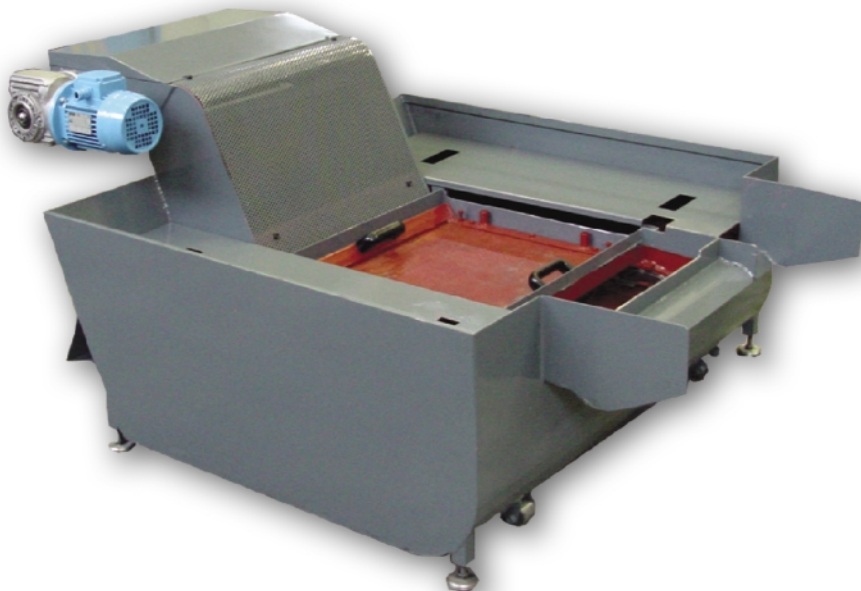
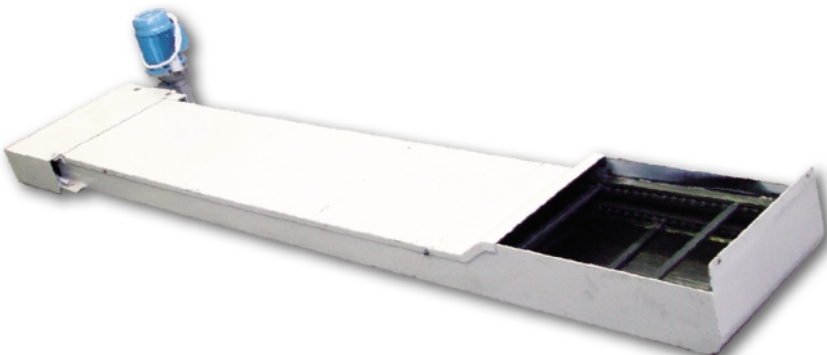
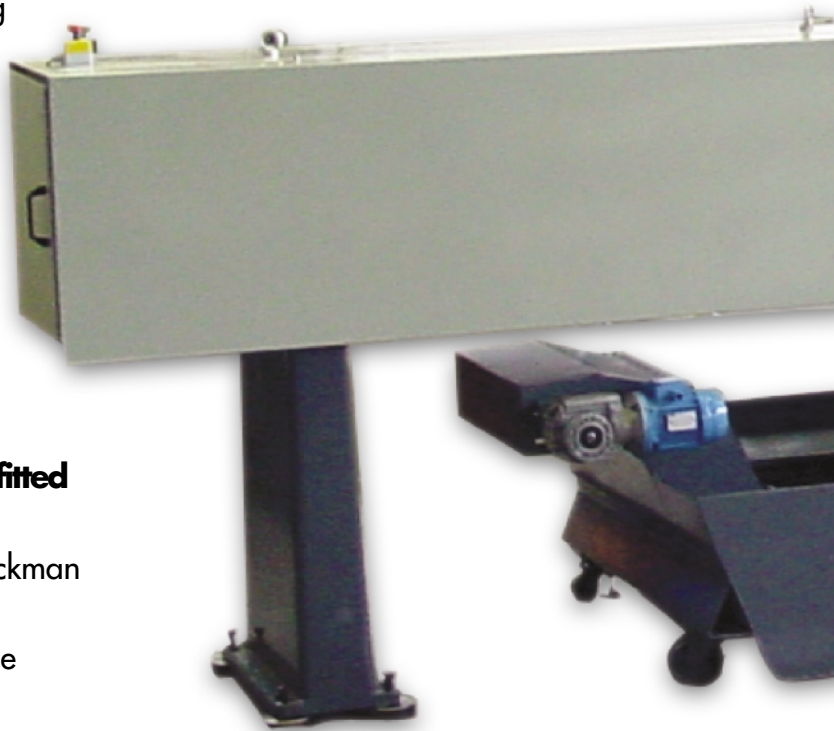
The new swarf removal system consists of an external tank and a paddle-type conveyor. The advantages of this system are:

- A reduction in the frequency of time consuming tank emptying cleaning operations.
- Filtering of the coolant prior to its return to the machine.
- A 50% increase in the capacity of coolant.

The time-control function of the secondary conveyor enables full draining of the swarf prior to removal.

### **This new swarf removal system can be retrofitted to all existing Wickman Machines !**

If you are tired of removing swarf from your Wickman machines, take the affair, ask your local dealer for a quotation. For multiple orders you will receive a discounted price.



## **ACW WICKMAN - save**

Today there are more than 15.000 WICKMAN multi-spindle lathes in production worldwide machining high-accuracy mechanical components.

Many companies that use Wickman machines have already made large investments in terms of:

- Know-how of the machine setters and operators
- Tools & Tool-Holders
- Collets & Feed Fingers
- Attachments



## **time, save money**

The new ACW WICKMAN range enables the user to take advantage of the latest developments in control and AC Drive technology without having to under-go intensive re-training of the operators and setters. The tooling and attachments that are used on existing Wickman machines are completely interchangeable with the ACW WICKMAN range.

The benefits of the ACW WICKMAN range are many and include:

- Dramatic reduction of set-up times
- Improved machine flexibility
- Reduced cycle times
- Lower noise levels
- Reduced down-times & overall lower maintenance costs

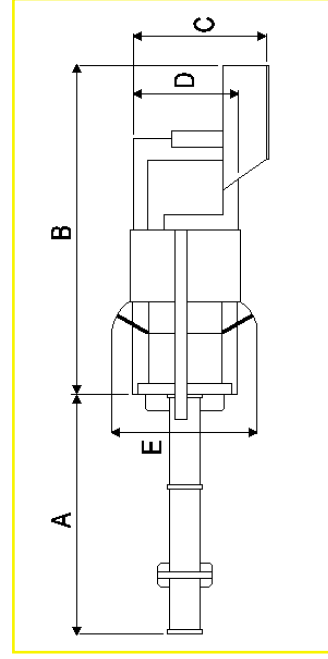
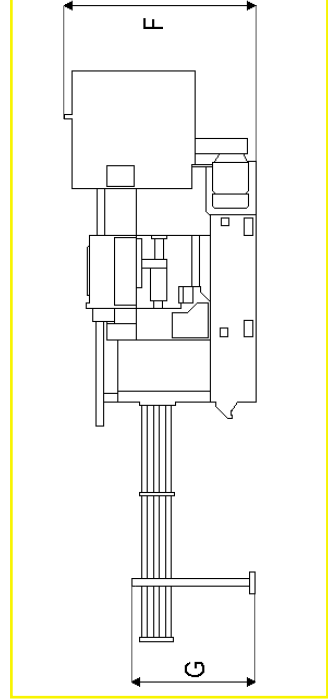


# WICKMAN ACW TECHNICAL DATA

This data is for guidance only and may be subject to change

	ACW 6-16	ACW 6-25	ACW 6-35	ACW 6-44	ACW 6-57	ACW 6-45	ACW 6-67	ACW 6-82
<b>Bar Capacity</b>								
Round	16mm	26mm	35mm	44mm	57mm	44mm	67mm	82mm
Hexagon (across flats)	0.54"	0.86"	1.19"	1.51"	1.95"	1.51"	2.27"	2.81"
Square (across flats)	0.44"	0.70"	0.97"	1.23"	1.59"	1.23"	1.85"	2.29"
<b>Bar Feed Stroke</b>								
Standard	0-3 1/2"	0-5"	1/2"-7"	12mm-176mm	1/2"-10"	12mm-254mm	1/2"-5"	12mm-126mm
Long Bar Feed	0-4"	0-100mm	2"-13"	50mm-406mm	2"-16"	50mm-406mm	5"-10"	127mm-254mm
Double Bar Feed	0-3 1/2"	0-88.9mm	1/2"-7"	12mm-176mm	1/2"-6"	12mm-153mm	(Not available)	(Not available)
Double Long Bar Feed	(Not available)	0-3 1/2"	4"-11"	100mm-279mm	2"-10"	50mm-254mm	(Not available)	(Not available)
<b>Feed Stroke</b>								
Centre Block	0-2"	0-2 1/2"	0-3 1/2"	0-89mm	0-5"	0-127mm	0-5"	0-127mm
<b>Approach Stroke</b>								
Centre Block	Zero Feed Stroke	Standard	Standard	Standard	Standard	Standard	Standard	Standard
	1.45" (2.2")	2 1/2"	3 1/2"	89mm	102mm	5"	5"	127mm
	Max. Feed Stroke	Special	Special	63mm	90mm	Special	Special	89mm
	0.6" (1.25")	2"	2 1/2"	0-89mm	0-5"	3 1/2"	3 1/2"	0-143mm
<b>Longitudinal Slide Stroke</b>								
	"A" Position	0-2 1/2"	0-3 1/2"	0-89mm	0-5"	0-127mm	0-5 5/8"	
	"B" Position							
	1"-3 1/2"							
<b>Feed Stroke</b>								
Lower Cross Slides	0-1 1/2"	0-12.7mm	0-1 1/2"	0-32mm	0-1 3/8"	0-35mm	0-1 3/8"	0-44mm
Upper Cross Slides	1/2 - 60	0-12.7mm	0-1 1/2"	0-48mm	0-2 1/8"	0-54mm	0-2 1/2"	0-63mm
Intermediate Cross Slides	0-0.35"	0-8.9mm	0-2 3/8"	0-22mm	0-1 3/16"	0-30mm	1/8" - 1 13/16"	3-35mm
<b>Variable Spindle Speed</b>								
Standard (RPM)	100 - 5500	100 - 4000	100 - 2750	100 - 2250	50 - 2000	50 - 2000	30 - 1300	30 - 1200
Spindle Stopper (RPM)	100 - 3600	100 - 2800	(Not available)	100 - 1800	50 - 1400	50 - 1400	30 - 900	(Not available)
Programmable Idle Time	0.6 - 0.8	1.0 - 1.2	1.4 - 1.9	1.6 - 1.9	1.9 - 2.4	2.4 - 2.8	2.4 - 2.8	2.8 - 3.6
Bar Loader, Spindle Stopper or Long Bar Feed (sec)	0.9 - 60	2.0 - 180	3.4 - 350	3.8 - 350	4.0 - 600	4.5 - 700	5.2 - 700	7.1 - 700
Range of Variable Cycle Times	1/2 - 60	2.2 - 180	(Not available)	4.0 - 350	6.0 - 600	7.5 - 700	6.5 - 700	(Not available)
Spindle Stopper (sec)	10.5 KW	27 Nm	15 KW	15 KW	15 KW	22 KW	22 KW	22 KW
Variable Speed Motor Power	0.3 KW	0.8 KW	1.5 KW	1.5 KW	2.8 KW	2.8 KW	2.8 KW	2.8 KW
Variable Feed Motor Power	0.25 KW	0.25 KW	0.25 KW	0.25 KW	0.25 KW	0.25 KW	0.25 KW	0.25 KW
Coolant System Motor Power	17.5	20	24.4	24.4	26	37	37	37
Lubrication System Motor Power								
<b>Overall Dimensions</b>								
Without Stock Carriage	36 x 115 3/4"	49 1/2" x 131 3/4"	57 3/4" x 154 3/4"	58" x 164 1/2"	58" x 164 1/2"	62" x 166"	62" x 166"	62" x 166"
With stock Carriage	91.5mm x 2737mm	1257mm x 3346mm	978mm x 3930mm	1473mm x 4178mm	1473mm x 4178mm	1562mm x 4200mm	1562mm x 4200mm	1562mm x 4200mm
	36 x 227 1/8"	49 1/2" x 246"	57 3/4" x 253 5/8"	58" x 262"	58" x 262"	62" x 261"	62" x 261"	62" x 261"
	91.5mm x 5769mm	1257mm x 6254mm	978mm x 6442mm	1473mm x 6652mm	1473mm x 6652mm	1562mm x 6626mm	1562mm x 6626mm	1562mm x 6626mm
<b>Nett Weight (Approximate - Includes the Electrical Equipment and Stock Carriage)</b>								
	6725 lb	13890 lb	17806 lb	17806 lb	22400 lb	22400 lb	28000 lb	28000 lb
	3050 kg	6313 kg	8077kg	8077kg	10150 kg	10150 kg	12700 kg	12700 kg

	ACW 6-16	ACW 6-25	ACW 6-35	ACW 6-44	ACW 6-57	ACW 6-67	ACW 6-82
<b>A</b>	119 1/2	114 1/2	106 3/8	106 3/8	106 1/8	98 1/2	98 1/2
	3026	2908	2702	2702	2700	2500	2500
<b>B</b>	108 1/4	131 3/4	147 1/4	147 1/4	162 1/2	162 1/4	162 1/4
	2750	3346	3470	3470	4128	4120	4120
<b>C</b>	44 1/2	40 1/2	65	65	59 9/16	60 1/4	60 1/4
	1130	1028	1397	1397	1515	1530	1530
<b>D</b>	33	42 3/8	48 1/2	48 1/2	54	55 1/8	55 1/8
	838	1063	1232	1232	1372	1400	1400
<b>E</b>	51 1/2	54 1/4	68 1/2	68 1/2	88 1/8	88 1/4	88 1/4
	1308	1378	1740	1740	2238	2240	2240
<b>F</b>	71 1/4	90 1/2	89 1/2	89 1/2	94 1/2	94 1/2	94 1/2
	1810	2300	2273	2273	2400	2400	2400
<b>G</b>	54	55	57	57	60 1/2	60 5/8	60 5/8
	1372	1397	1448	1448	1537	1540	1540





### **Wickman UK**

Wickman Coventry Ltd  
Automatic House  
Discovery Way  
Leofric Business Park  
Binley, Coventry CV3 2TD  
P: +44 (0) 2476 547900  
F: +44 (0) 2476 547960  
email: [enquiries@wickman-group.com](mailto:enquiries@wickman-group.com)

### **Wickman France**

PAE Les Jourdiés  
221 Rue Du Rhone  
74800 Saint Pierre en Faucigny  
France  
P: 0033 (0)450 257 730  
F: 0033 (0)450 257 580  
email [wickman-france@wanadoo.org](mailto:wickman-france@wanadoo.org)

### **Wickman Iberia**

(Spain, Portugal & Mexico)  
Poligono Industrial de Riu Clar  
Unit 29  
Parcela 131  
Tarragona  
Espana  
P: 0034 977553458  
F: 0034 977553873  
email [info@wickmaniberia.com](mailto:info@wickmaniberia.com)

### **Wickman Nordic**

(Norway, Sweden, Finland, Denmark,  
Estonia)  
Postboks 7081, St Olavs pl.  
0130 Oslo  
Norway  
P: 0047 23 29 1905  
F: 0047 23 29 1901  
email [jere.hiedanpaa@wickman-nordic.com](mailto:jere.hiedanpaa@wickman-nordic.com)

### **ΩWickman Poland**

29, Smolika Street  
91-357 LODZ  
Poland  
Tel/Fax: 0048 42 658 0065  
Mobile: 0048 601 377 635  
email [zgorecki@ekotex.infocentrum.com](mailto:zgorecki@ekotex.infocentrum.com)

### **Wickman South America (Brasil)**

Av. Das Nacoes Unidas  
3300 Sala B Osasco - SP -  
Brasil CEP 06233-200  
P: 0055 11 6967 6240  
F: 0055 11 6954 0108  
email [k.estivalet@wickman-brasil.com](mailto:k.estivalet@wickman-brasil.com)

### **Your local distributor**

